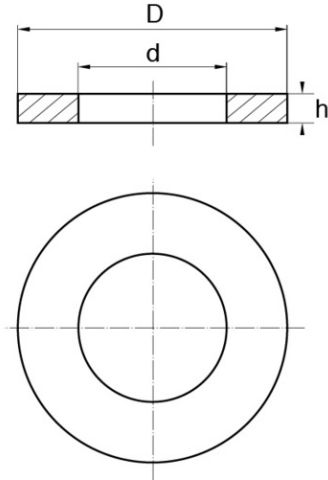


Washers ~ DIN 440 (form R)



Details du produit

Description

It is a flat washer according to DIN 440 or similar to ISO 7094. This large and thick framing washer is a derivative of the zinc-plated steel construction washer. It is suitable for assembly work.

Advantages

This type R washer has a thicker finish.

Qualities

This wide washer is suitable for wooden constructions.

usage

This flat washer is mainly used in the field of carpentry and wooden constructions, especially for the manufacture of shelters or pergolas. Its thickness facilitates assembly for heavier applications.

d	D	h	M	Minimum sales Quantity	SKU
11,3	34,0	3,0	10	1000	44010A
13,0	45,0	4,0	12	1000	44012A
5,5	18,0	2,0	5	1000	4405A
6,4	22,0	2,0	6	1000	4406A
8,3	28,0	3,0	8	1000	4408A



37B Basepoint Centre Harts Farm Way Havant Hampshire PO9 1HS