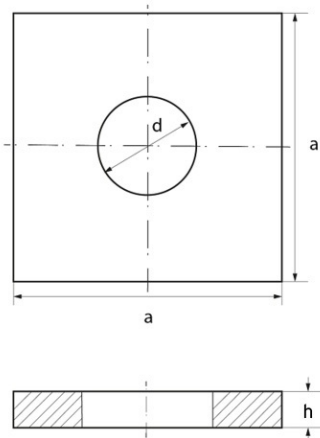


# Square washers DIN 436



## Details du produit

### Description

Flat square shaped washers meeting the requirements of DIN 436. These plate-shaped washers are recommended for use on softer surfaces such as wood. The larger surface area gives better adhesion and protection to the surface material.

### Advantages

Its use is optimal when combined with structural bolts.

### Qualities

The wide cutout of its base ensures better adhesion to the surface to be fixed.

### usage

Support washer, generally used in natural material constructions such as wood. It is optimally used in combination with structural bolts.

a	d	h	M	Minimum sales Quantity	SKU
30x30	11,0	3,0	10	500	43610A
40x40	13,5	4,0	12	500	43612A
50x50	17,5	5,0	16	500	43616A
60x60	22,0	5,0	20	500	43620A
70x70	24,0	6,0	22	500	43622A



37B Basepoint Centre Harts Farm Way Havant Hampshire PO9 1HS