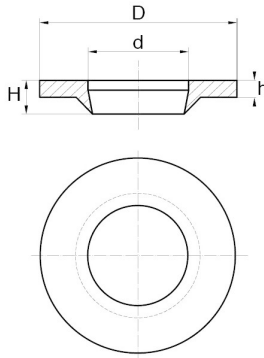


Bülte anti-loss washers



Details du produit

Description

With the Cone diameter smaller than the diameter of the screw being used, this washer will hold the screw in position until tightening is required. The conical part of the washer is then squeezed into the thread providing a lock between the threaded components. Our standard material is natural nylon.

Advantages

This washer is the ideal product to avoid losing your screws! Used in combination with a full threaded screw for best results under the screw head, or with the nut for secure fixing of nut to screw. This style of washer will also keep your components together prior to tightening up.

Qualities

These Bülte captive washers make manual pre-assembly easier in hard-to-reach places saving time. Disassembly is only possible by physically releasing the washer. This means that they can only be used once.

usage

The main areas of application for these Bülte captive washers is across all industrial sectors where secure threaded fastening is required.

d	D	h	H	M	Minimum sales Quantity	SKU
10,3	13,8	2,0	4,0	10	5000	RIMP10/1A
10,5	15,0	2,1	4,3	10	1000	RIMP10A
10,2	19,6	2,2	3,5	10	1000	RIMP10EA
3,6	9,1	1,2	2,7	N/A	1000	RIMP3.5A
4,2	9,0	1,3	3,0	N/A	1000	RIMP4.2A
5,0	10,1	1,6	3,1	N/A	1000	RIMP4.8A
4,1	9,0	1,6	3,0	4	1000	RIMP4A

d	D	h	H	M	Minimum sales Quantity	SKU
5,0	10,1	1,6	3,1	5	1000	RIMP5A
6,3	12,5	1,3	2,7	6	1000	RIMP6A
8,2	16,2	1,6	3,5	8	1000	RIMP8A
21,5	27,6	2,1	4,2	N/A	500	RIMPR1/2A
13,2	18,9	2,6	4,5	N/A	500	RIMPR1/4A
10,5	15,0	2,1	4,3	N/A	1000	RIMPR1/8A
17,7	23,0	2,1	4,5	N/A	500	RIMPR3/8A



Bülte England

37B Basepoint Centre Harts Farm Way Havant Hampshire PO9 1HS