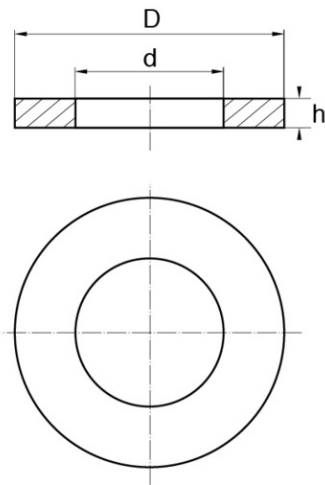
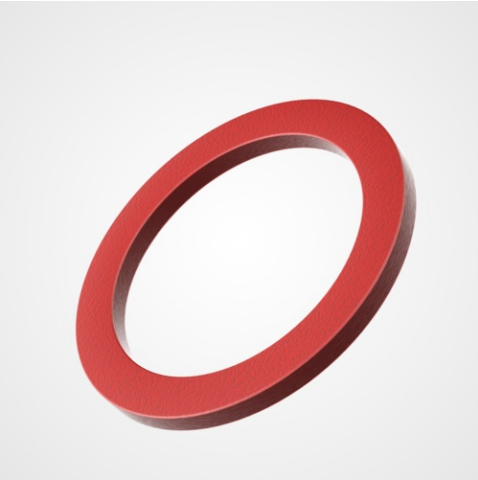


Washers RF



Details du produit

Description

The red fibre washer, used extensively in plumbing applications and the water industry, creating an effective seal within couplings and glands.

Advantages

It can also be used as a low voltage electrical insulation washer in dry low humidity environments

Qualities

Resistant to water, oils, and organic solvents

usage

Used in the electrical and electronic field due to its insulation properties, but also in plumbing. water and food sectors.(KTW approval).

d	D	h	M	Minimum sales Quantity	SKU
10,5	21,0	1,0	10	1000	RF10.5AT
13,0	24,0	2,5	12	1000	RF13.0AT
17,0	30,0	3,0	16	500	RF17.0AT
2,7	6,0	0,5	2,5	1000	RF2.5AT
21,0	37,0	3,0	20	500	RF21.0AT
3,2	7,0	0,5	3	1000	RF3.2AT
4,3	9,0	0,8	4	1000	RF4.3AT
4,3	9,0	1,0	4	1000	RF4.3ATN

d	D	h	M	Minimum sales Quantity	SKU
5,3	10,0	1,0	5	1000	RF5.3AT
6,4	12,5	1,0	6	1000	RF6.4AT
8,4	17,0	1,0	8	1000	RF8.4AT



Bülte England
37B Basepoint Centre Harts Farm Way Havant Hampshire PO9 1HS