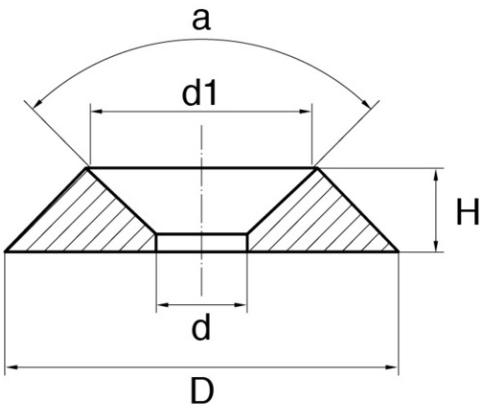


# Metric finishing washers RCUV



## Details du produit

### Description

The cup washer is an essential technical fixing part with its own characteristics. This is a finishing washer whose name for this type of washers comes from their rather particular bowl shape.

### Advantages

This plastic cup washer is robust and absorbs shocks and vibrations. Its conical shape provides good electrical insulation. Its aesthetic appearance improves fixation.

### Qualities

Theis metric finishing washer is a must have in the industry. We have 4 different ones at Bülte. Its availability in natural nylon or black nylon provides an aesthetic advantage

### usage

This washer is specially designed for assembly with countersunk screws. It is an essential part in various sectors of activity such as mechanics, plumbing but also electricity.

a	d	d1	D	H	M	Minimum sales Quantity	SKU
90°	3,0	6,5	9,2	1,9	3	1000	RCUV3A
90°	3,0	6,5	9,2	1,9	3	1000	RCUV3B
90°	4,3	8,0	11,9	3,0	4	1000	RCUV4A
90°	4,3	8,0	11,9	3,0	4	1000	RCUV4B
90°	5,3	9,8	15,3	3,5	5	1000	RCUV5A
90°	5,3	9,8	15,3	3,5	5	1000	RCUV5B
90°	6,3	11,7	17,0	4,5	6	1000	RCUV6A

a	d	dI	D	H	M	Minimum sales Quantity	SKU
90°	6,3	11,7	17,0	4,5	6	1000	RCUV6B
90°	8,0	14,3	22,3	5,9	8	1000	RCUV8A
90°	8,0	14,3	22,3	5,9	8	1000	RCUV8B



**Bülte England**  
37B Basepoint Centre Harts Farm Way Havant Hampshire PO9 1HS