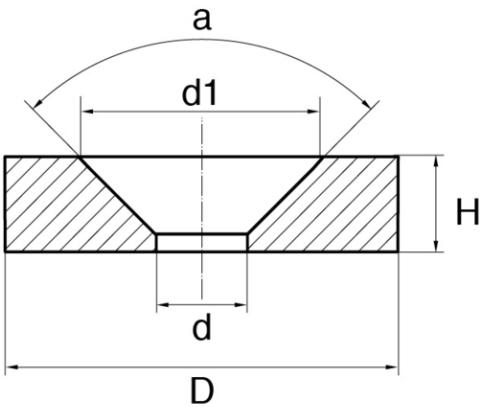
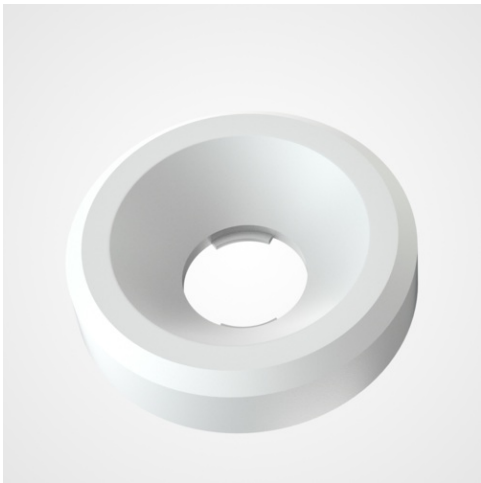


## Metric finishing washers RCC



### Details du produit

#### Description

RCC washers are finishing washers. They protect surfaces, provide good electrical insulation and absorb shocks and vibrations. They are available in black nylon and white nylon as standard, so you can choose your color according to your need.

#### Advantages

A finishing washer provides a final touch to the assembly or fixing. Its function is mainly aesthetic. They allow to obtain clean, neat and successful assemblies.

#### Qualities

It also helps protect screws and prevent injury.

#### usage

These finishing washers are for use with countersunk screws. They are used in many sectors of activity, and in many trades related to the building: plumbing, carpentry, electricity, mechanics,....

a	d	d1	D	H	Minimum sales Quantity	SKU
90°	3,2	6,0	8,4	2,2	1000	RCC3B
90°	3,2	6,0	8,4	2,2	1000	RCC3C
90°	4,3	8,0	10,5	2,8	1000	RCC4B
90°	4,3	8,0	10,5	2,8	1000	RCC4C
90°	5,2	9,8	12,5	3,3	1000	RCC5B
90°	5,2	9,8	12,5	3,3	1000	RCC5C
90°	6,2	11,5	15,0	4,1	1000	RCC6B

<b>a</b>	<b>d</b>	<b>dI</b>	<b>D</b>	<b>H</b>	<b>Minimum sales Quantity</b>	<b>SKU</b>
90°	6,2	11,5	15,0	4,1	1000	RCC6C
90°	8,2	16,0	20,0	5,0	1000	RCC8B
90°	8,2	16,0	20,0	5,0	1000	RCC8C



**Bülte England**  
37B Basepoint Centre Harts Farm Way Havant Hampshire PO9 1HS