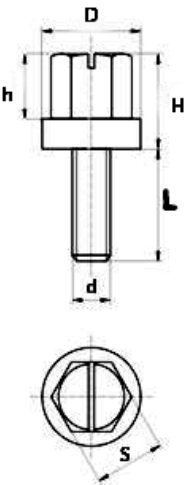
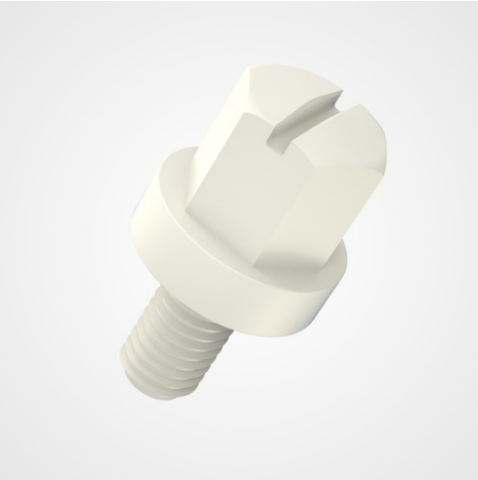


Hex head slotted screws PLAS 182



Details du produit

Description

This hexagon head (hex head) screw is part of our PLAS range of hex heads (see PLAS180/PLAS186/PLAS187) moulded with a load bearing collar under the head. PLAS182 is also slotted providing two options for tightening. The head/collar dimensions are the same for all sizes.

Qualities

Provides a light weight, non corrosive, non conductive fastener with many other advantages over steel screws. For 15 and 17mm lengths, there is a 5mm unthreaded part under the head. For the majority of screws there is an integral thread up to 80mm.

Advantages

All the advantages of Polyamide material (nylon) and dual tightening methods.

usage

These screws are extremely versatile and can have various uses. Conventional screw holding components together, or as a threaded plug for thread protection, or to close a lubrication point... Please note: The finish of each piece may differ according to the reference chosen. Depending on the mold, the surface may be more or less rough. For pearlescent or metallic colors, streaks and color nuances may appear at the weld line. Illustrations are not contractual.

d	D	h	H	L	S	Minimum sales Quantity	SKU
M10	13,0	8,0	12,0	10,0	10	5000	PLAS1821010A
M10	13,0	8,0	12,0	12,0	10	5000	PLAS1821012A
M10	13,0	8,0	12,0	15,0	10	10000	PLAS1821015/10A
M10	13,0	8,0	12,0	16,0	10	5000	PLAS1821016A
M10	13,0	8,0	12,0	17,0	10	10000	PLAS1821017/12A
M10	13,0	8,0	12,0	20,0	10	5000	PLAS1821020A

d	D	h	H	L	S	Minimum sales Quantity	SKU
M10	13,0	8,0	12,0	25,0	10	5000	PLAS1821025A
M10	13,0	8,0	12,0	30,0	10	5000	PLAS1821030A
M10	13,0	8,0	12,0	35,0	10	5000	PLAS1821035A
M10	13,0	8,0	12,0	40,0	10	5000	PLAS1821040A
M10	13,0	8,0	12,0	45,0	10	5000	PLAS1821045A
M10	13,0	8,0	12,0	50,0	10	5000	PLAS1821050A
M10	13,0	8,0	12,0	60,0	10	5000	PLAS1821060A
M10	13,0	8,0	12,0	6,0	10	5000	PLAS182106A
M10	13,0	8,0	12,0	70,0	10	5000	PLAS1821070A
M10	13,0	8,0	12,0	80,0	10	5000	PLAS1821080A
M10	13,0	8,0	12,0	8,0	10	5000	PLAS182108A
M4	13,0	8,0	12,0	10,0	10	5000	PLAS182410A
M4	13,0	8,0	12,0	12,0	10	5000	PLAS182412A
M4	13,0	8,0	12,0	15,0	10	10000	PLAS182415/10A
M4	13,0	8,0	12,0	16,0	10	5000	PLAS182416A
M4	13,0	8,0	12,0	17,0	10	10000	PLAS182417/12A
M4	13,0	8,0	12,0	20,0	10	5000	PLAS182420A
M4	13,0	8,0	12,0	25,0	10	5000	PLAS182425A
M4	13,0	8,0	12,0	30,0	10	5000	PLAS182430/25A
M4	13,0	8,0	12,0	6,0	10	5000	PLAS18246A
M4	13,0	8,0	12,0	8,0	10	5000	PLAS18248A

d	D	h	H	L	S	Minimum sales Quantity	SKU
M5	13,0	8,0	12,0	10,0	10	5000	PLAS182510A
M5	13,0	8,0	12,0	12,0	10	5000	PLAS182512A
M5	13,0	8,0	12,0	15,0	10	10000	PLAS182515/10A
M5	13,0	8,0	12,0	16,0	10	5000	PLAS182516A
M5	13,0	8,0	12,0	17,0	10	10000	PLAS182517/12A
M5	13,0	8,0	12,0	20,0	10	5000	PLAS182520A
M5	13,0	8,0	12,0	25,0	10	5000	PLAS182525A
M5	13,0	8,0	12,0	30,0	10	5000	PLAS182530A
M5	13,0	8,0	12,0	35,0	10	5000	PLAS182535A
M5	13,0	8,0	12,0	40,0	10	5000	PLAS182540A
M5	13,0	8,0	12,0	6,0	10	5000	PLAS18256A
M5	13,0	8,0	12,0	8,0	10	5000	PLAS18258A
M6	13,0	8,0	12,0	10,0	10	5000	PLAS182610A
M6	13,0	8,0	12,0	12,0	10	5000	PLAS182612A
M6	13,0	8,0	12,0	15,0	10	10000	PLAS182615/10A
M6	13,0	8,0	12,0	16,0	10	5000	PLAS182616A
M6	13,0	8,0	12,0	17,0	10	10000	PLAS182617/12A
M6	13,0	8,0	12,0	20,0	10	5000	PLAS182620A
M6	13,0	8,0	12,0	25,0	10	5000	PLAS182625A
M6	13,0	8,0	12,0	30,0	10	5000	PLAS182630A
M6	13,0	8,0	12,0	35,0	10	5000	PLAS182635A

d	D	h	H	L	S	Minimum sales Quantity	SKU
M6	13,0	8,0	12,0	40,0	10	5000	PLAS182640A
M6	13,0	8,0	12,0	45,0	10	5000	PLAS182645A
M6	13,0	8,0	12,0	50,0	10	5000	PLAS182650A
M6	13,0	8,0	12,0	6,0	10	5000	PLAS18266A
M6	13,0	8,0	12,0	8,0	10	5000	PLAS18268A
M8	13,0	8,0	12,0	10,0	10	5000	PLAS182810A
M8	13,0	8,0	12,0	12,0	10	5000	PLAS182812A
M8	13,0	8,0	12,0	15,0	10	10000	PLAS182815/10A
M8	13,0	8,0	12,0	16,0	10	5000	PLAS182816A
M8	13,0	8,0	12,0	17,0	10	10000	PLAS182817/12A
M8	13,0	8,0	12,0	20,0	10	5000	PLAS182820A
M8	13,0	8,0	12,0	25,0	10	5000	PLAS182825A
M8	13,0	8,0	12,0	30,0	10	5000	PLAS182830A
M8	13,0	8,0	12,0	35,0	10	5000	PLAS182835A
M8	13,0	8,0	12,0	40,0	10	5000	PLAS182840A
M8	13,0	8,0	12,0	45,0	10	5000	PLAS182845A
M8	13,0	8,0	12,0	50,0	10	5000	PLAS182850A
M8	13,0	8,0	12,0	60,0	10	5000	PLAS182860A
M8	13,0	8,0	12,0	6,0	10	5000	PLAS18286A
M8	13,0	8,0	12,0	8,0	10	5000	PLAS18288A



Bülte England

37B Basepoint Centre Harts Farm Way Havant Hampshire PO9 1HS