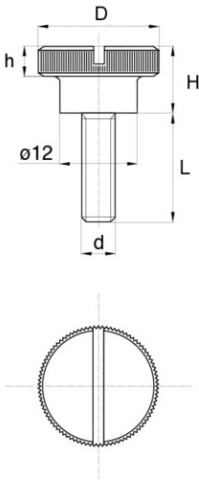


Viti a testa zigrinata 658



Dettagli del prodotto

Descrizione

Si tratta di una vite a testa zigrinata con flangia interamente filettata in plastica. È una referenza esclusiva di Bülte. La flangia è ampiamente fessurata e le scanalature applicate sul perimetro della flangia conferiscono l'aderenza necessaria. La proponiamo standard in Nylon naturale.

Vantaggi

Possono essere serrate e allentate senza l'uso di attrezzi, il che le rende facili da usare.

Qualità

Interamente in plastica, sono più leggere e pratiche rispetto alla loro 'equivalente in acciaio zincato.

Utilizzo

Sono adatte per i serraggi e i fissaggi manuali.

d	dI	D	h	H	L	Quantità minima di vendita	Articolo
M10	12,0	19,5	4,0	9,0	10,0	5000	6581010A
M10	12,0	19,5	4,0	9,0	12,0	5000	6581012A
M10	12,0	19,5	4,0	9,0	16,0	5000	6581016A
M10	12,0	19,5	4,0	9,0	20,0	5000	6581020A
M10	12,0	19,5	4,0	9,0	25,0	5000	6581025A
M10	12,0	19,5	4,0	9,0	30,0	5000	6581030A
M10	12,0	19,5	4,0	9,0	35,0	5000	6581035A

d	d1	D	h	H	L	Quantità minima di vendita	Articolo
M10	12,0	19,5	4,0	9,0	40,0	5000	6581040A
M10	12,0	19,5	4,0	9,0	45,0	5000	6581045A
M10	12,0	19,5	4,0	9,0	50,0	5000	6581050A
M10	12,0	19,5	4,0	9,0	60,0	5000	6581060A
M10	12,0	19,5	4,0	9,0	6,0	5000	658106A
M10	12,0	19,5	4,0	9,0	70,0	5000	6581070A
M10	12,0	19,5	4,0	9,0	80,0	5000	6581080A
M10	12,0	19,5	4,0	9,0	8,0	5000	658108A
M5	12,0	19,5	4,0	9,0	10,0	5000	658510A
M5	12,0	19,5	4,0	9,0	12,0	5000	658512A
M5	12,0	19,5	4,0	9,0	16,0	5000	658516A
M5	12,0	19,5	4,0	9,0	20,0	5000	658520A
M5	12,0	19,5	4,0	9,0	25,0	5000	658525A
M5	12,0	19,5	4,0	9,0	30,0	5000	658530A
M5	12,0	19,5	4,0	9,0	35,0	5000	658535A
M5	12,0	19,5	4,0	9,0	40,0	5000	658540A
M5	12,0	19,5	4,0	9,0	6,0	5000	65856A
M5	12,0	19,5	4,0	9,0	8,0	5000	65858A
M6	12,0	19,5	4,0	9,0	10,0	5000	658610A
M6	12,0	19,5	4,0	9,0	12,0	5000	658612A
M6	12,0	19,5	4,0	9,0	16,0	5000	658616A

d	d1	D	h	H	L	Quantità minima di vendita	Articolo
M6	12,0	19,5	4,0	9,0	20,0	5000	658620A
M6	12,0	19,5	4,0	9,0	25,0	5000	658625A
M6	12,0	19,5	4,0	9,0	30,0	5000	658630A
M6	12,0	19,5	4,0	9,0	35,0	5000	658635A
M6	12,0	19,5	4,0	9,0	40,0	5000	658640A
M6	12,0	19,5	4,0	9,0	45,0	5000	658645A
M6	12,0	19,5	4,0	9,0	50,0	5000	658650A
M6	12,0	19,5	4,0	9,0	6,0	5000	65866A
M6	12,0	19,5	4,0	9,0	8,0	5000	65868A
M8	12,0	19,5	4,0	9,0	10,0	5000	658810A
M8	12,0	19,5	4,0	9,0	12,0	5000	658812A
M8	12,0	19,5	4,0	9,0	16,0	5000	658816A
M8	12,0	19,5	4,0	9,0	20,0	5000	658820A
M8	12,0	19,5	4,0	9,0	25,0	5000	658825A
M8	12,0	19,5	4,0	9,0	30,0	5000	658830A
M8	12,0	19,5	4,0	9,0	35,0	5000	658835A
M8	12,0	19,5	4,0	9,0	40,0	5000	658840A
M8	12,0	19,5	4,0	9,0	45,0	5000	658845A
M8	12,0	19,5	4,0	9,0	50,0	5000	658850A
M8	12,0	19,5	4,0	9,0	60,0	5000	658860A
M8	12,0	19,5	4,0	9,0	6,0	5000	65886A

d	d1	D	h	H	L	Quantità minima di vendita	Articolo
M8	12,0	19,5	4,0	9,0	8,0	5000	65888A



**Bülte Plastiques France**

Z.A. de Morlon Portes lès Valence 26 800