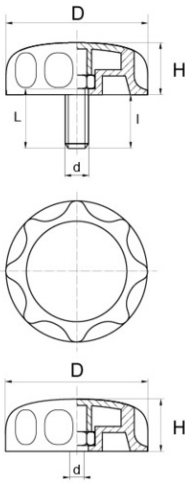
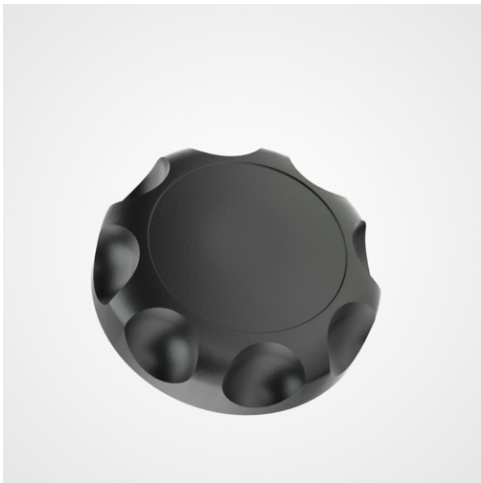


Flat star grip BPF 540 (female)



Details du produit

Description

The female BPF flat button is composed of a black nylon part and a zinc-plated steel insert. This is the BPF 540 model. A steel screw can penetrate this knob to ensure optimal tightening and adjustment.

Advantages

This knob is available with several different inserts, either in galvanized steel, stainless steel, brass and even all nylon. Allows the optimal tightening and adjustment of an assembly when this part is accompanied by a screw.

Qualities

It allows the optimal tightening and adjustment of an assembly when this part is accompanied by a screw.

usage

Use for clamping and locking applications on thinner materials. Also used in furniture applications.

d	D	H	Minimum sales Quantity	SKU
M8	54,0	20,0	100	BPF5408BAZ
M8	54,0	20,0	100	BPF5408BI
M8	54,0	20,0	100	BPF5408BMS
M8	54,0	20,0	100	BPF5408BNY

