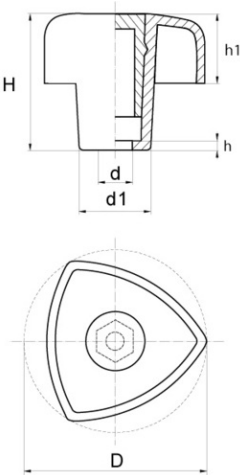
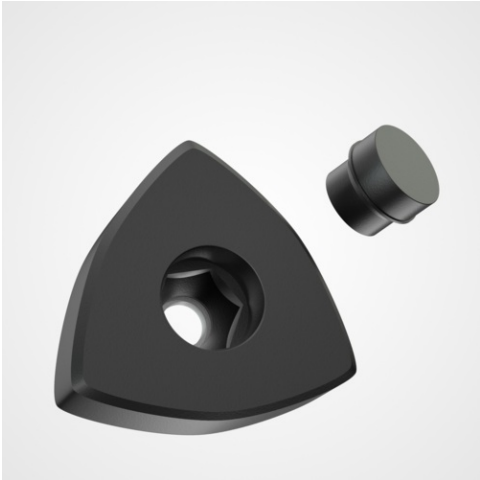


# Triangular plastimont



## Details du produit

### Description

This Triangular shaped body comes in two sizes, 49mm dia turning area (CO200) suitable for m6 and m8, and 30mm (CO195) suitable for m5 and m6. It is supplied with a cap to cover the insert and provide a clean, finished appearance.

### Qualities

Manufactured in black Polyamide they are resistant to grease and oils, and are hard wearing.

### Advantages

With their ergonomic shape these fastener bodies are an attractive option when they will be visible as part of the application.

### usage

Use for clamping and locking applications where frequent use is required.

d	d1	D	h	h1	H	S	Minimum sales Quantity	SKU
M5	15,0	30,0	2,5	10,0	14,0	8	100	CO1955B
M6	15,0	30,0	3,0	10,0	14,0	10	100	CO1956B
M6	20,0	49,0	3,0	18,0	26,0	10	100	CO2006B
M8	20,0	49,0	3,5	18,0	26,0	13	100	CO2008B

