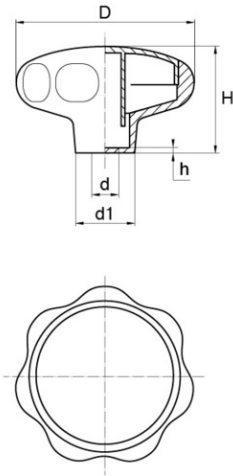


Touch lobe Style Plastimont



Details du produit

Description

This range of larger round knobs, with a scalloped edge for a comfortable grip, has outside diameters from 40mm up to 80mm, and are suitable for insert sizes, m6, m8, m10 and m12 depending on model chosen. Each one is supplied with a cover which fully closes the knob to leave a clean finished appearance.

Advantages

With their ergonomic shape these fastener bodies are an attractive option when they will be visible as part of the application.

Qualities

Manufactured in black Polyamide they are resistant to grease and oils, are hard wearing, and lightweight for their size.

usage

These knobs are for heavier duty applications where manual fastening but higher torque needs to be achieved.

d	d1	D	h	H	S	Minimum sales Quantity	SKU
M6	19,0	40,0	4,0	27,0	10	100	CO400L6B
M8	19,0	40,0	3,0	27,0	13	100	CO400L8B
M10	23,0	50,0	3,0	35,0	17	100	CO500L10B
M6	18,0	50,0	5,0	35,0	10	100	CO500L6B
M8	18,0	50,0	4,0	35,0	13	100	CO500L8B
M10	23,0	62,5	3,0	39,0	17	100	CO630L10B
M8	23,0	62,5	4,0	39,0	13	100	CO630L8B

d	dI	D	h	H	S	Minimum sales Quantity	SKU
M10	25,0	80,0	4,0	52,0	17	100	CO800L10B
M12	25,0	80,0	3,0	52,0	19	100	CO800L12B



Bülte England
37B Basepoint Centre Harts Farm Way Havant Hampshire PO9 1HS