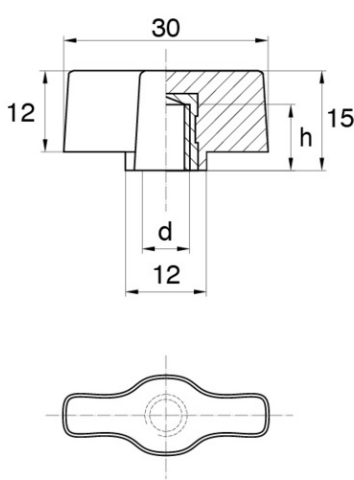
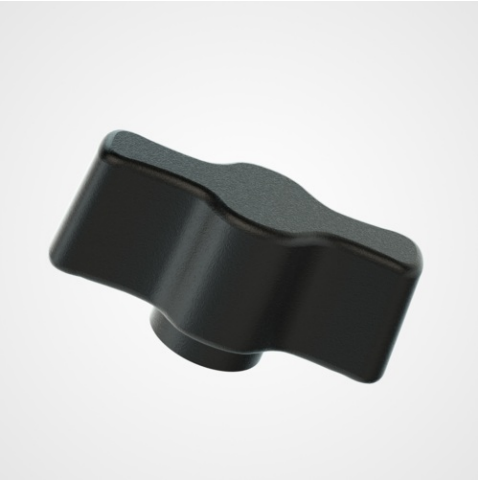


Wing nuts BPF 150



Details du produit

Description

It is a black nylon/metal nut, therefore bi-material, with a diameter of 30 mm. This is the BPF 150 model. This wing nut with 12 mm diameter fins. It is a type F nut, therefore non-opening (closed).

Advantages

Thanks to its butterfly shape, you won't need any tools to screw it on. It screws on easily by hand.

Qualities

In addition, it has increased strength thanks to its bi-material side.

usage

These wing nuts are often used in construction, industry and furniture.

d	d1	D	h	H	Minimum sales Quantity	SKU
M5	12,0	30,0	12,0	15,0	5000	BPF1505BMS
M6	12,0	30,0	12,0	15,0	5000	BPF1506BMS