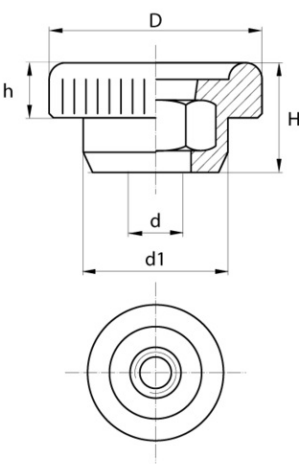


# Knurled nuts BPF 105



## Details du produit

### Description

It is a very strong 20 mm diameter knurled nut, thanks to its nylon head and zinc-plated steel insert. This is the BPF 105 model.

### Advantages

The knurled nut allows manual assembly, is very resistant and is anti-corrosive. It does not conduct electricity.

### Qualities

You can screw in by hand, and thus assemble your inaccessible parts with a tool.

### usage

They are often used in aeronautics, industry and the electrical field ...

d	d1	D	h	H	Minimum sales Quantity	SKU
M3	9,0	20,0	7,0	8,0	1000	BPF1053BAZ
M4	9,0	20,0	7,0	8,0	1000	BPF1054BAZ
M5	9,0	20,0	7,0	8,0	1000	BPF1055BAZ