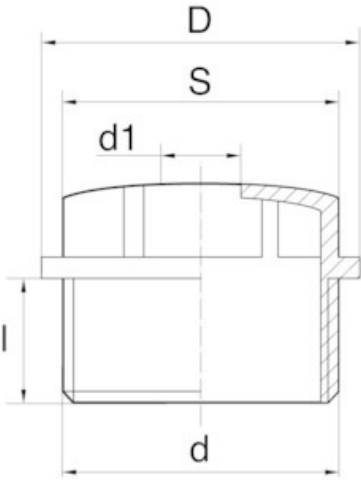
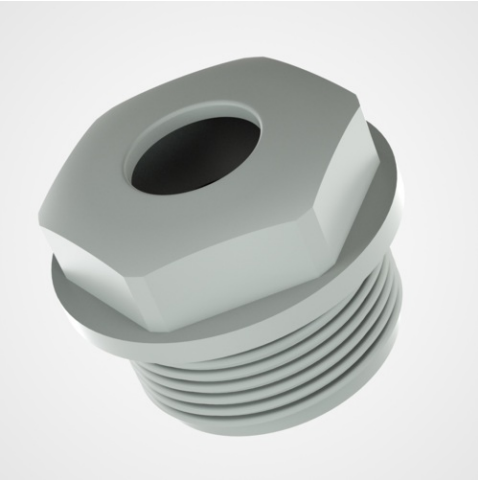


# Metric hex head plug



## Details du produit

### Description

This is an efficient way to connect pipes or cables. It is a cylindrical part to assemble; isolate and protect. It is easily installed by screwing. When properly installed, the end fitting can be fitted. They are made of PE-LD / gray RAL 7035 and metric thread. We have 2 models available: form A which is a closed model, and form B - an opening model allowing the cable to pass through.

### Advantages

They extend the tightness of your systems, guarantee a compact and lightweight connection solution and have excellent concentricity and transmission of bending moments

### Qualities

Thanks to the PE-LD material, this sleeve is robust and light

### usage

Most often used in the electricity and electronics sector, they are a connector solution for the industrial fluids sector.

d	d1	D	l	Pitch	S	Minimum sales Quantity	SKU
M16	4,5	20,0	10,0	1,5	15	100	MTM16A
M16	4,5	20,0	10,0	1,5	15	100	MTM16B
M20	7,5	24,0	12,0	1,5	19	100	MTM20A
M20	7,5	24,0	12,0	1,5	19	100	MTM20B
M25	8,0	29,5	12,0	1,5	24	100	MTM25A
M25	8,0	29,5	12,0	1,5	24	100	MTM25B
M32	9,0	37,0	14,0	1,5	30	50	MTM32A

d	dI	D	I	Pitch	S	Minimum sales Quantity	SKU
M32	9,0	37,0	14,0	1,5	30	50	MTM32B
M40	15,0	45,5	16,0	1,5	37	25	MTM40A
M50	20+28	55,5	17,5	1,5	46	10	MTM50A
M63	22+33	68,5	20,0	1,5	56	10	MTM63A



**Bülte England**  
37B Basepoint Centre Harts Farm Way Havant Hampshire PO9 1HS