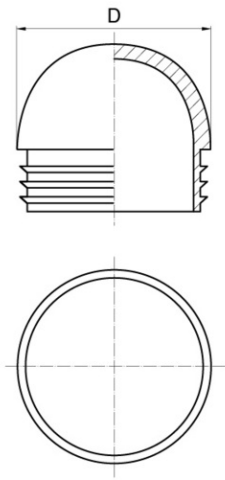
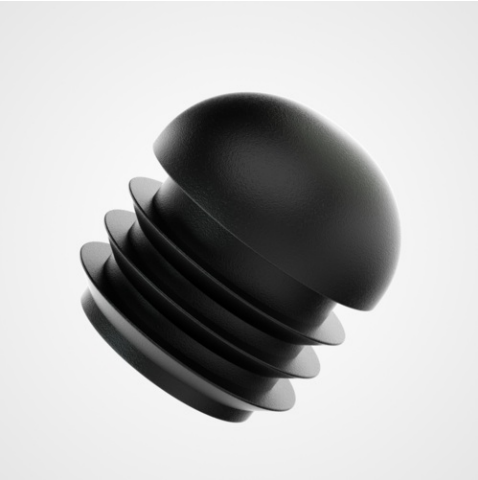


Round hole plugs for tubes with ball-head



Details du produit

Description

This is a semi-spherical head splined round hole plugs in black PE. For round tubes, and suitable for tubes with wall thicknesses between 1.0-2.0mm with a solid ball type foot.

Advantages

Protects the tube ends from damage and from damaging other surfaces. Also seals the tube against outside contamination.

Qualities

Its domed head allows this stopper to have a decorative aspect according to its context.

usage

For use in the construction of tubular framed furniture and fittings. Please note : The finish of each piece may differ according to the reference chosen. Depending on the mold, the surface may be more or less rough. Illustrations are not contractual.

C	D	Minimum sales Quantity	SKU
1,0-2,0	16,0	1000	BPTR16E1-2
1,0-2,0	18,0	1000	BPTR18E1-2
1,0-2,0	20,0	1000	BPTR20E1-2
1,0-1,5	22,0	1000	BPTR22E1-1.5
1,5-2,0	22,0	1000	BPTR22E1.5-2
1,0-2,0	25,0	500	BPTR25E1-2
1,0-2,0	28,0	500	BPTR28E1-2

C	D	Minimum sales Quantity	SKU
1,0-2,0	30,0	500	BPTR30E1-2
1,0-2,0	32,0	500	BPTR32E1-2
1,0-2,0	35,0	500	BPTR35E1-2
1,5-2,0	40,0	500	BPTR40E1.5-2
1,5-2,5	50,0	500	BPTR50E1.5-2.5
1,5-2,5	60,0	100	BPTR60E1.5-2.5



Bülte England
37B Basepoint Centre Harts Farm Way Havant Hampshire PO9 1HS