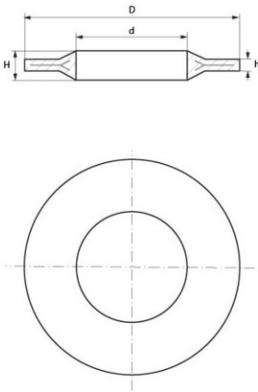


Bülte reinforced / bi-material locking and sealing washers



Details du produit

Description

These washers, also known as overmoulded fan washers, are available in A4 stainless steel and nylon as well as galvanized steel and polyamide. This toothed washer insert is a locking washer which reduces the risk of loosening, caused by vibrations or shocks. The teeth of the toothed washer dig into the part to be screwed, thus holding the bolt securely in place and strengthening the grip of the fastener.

Qualities

A4 stainless steel will be preferred in nautical construction or in an aggressive or polluted environment because of its greater resistance to corrosion.

Advantages

The real advantage of this washer is that it has a dual function: safety and sealing. In addition to friction resistance , the bi-material and in particular the polyamide squeezes into the threads providing a seal.

usage

This washer is used in the aeronautics and electrical sectors, as well as many other industries.

d	D	h	H	M	Minimum sales Quantity	SKU
10,2	19,0	2,7	5,4	10	1000	RBMI10
12,2	23,1	2,8	5,7	12	1000	RBMI12
3,0	7,0	1,3	2,2	3	1000	RBMI3
4,1	9,1	1,6	2,5	4	1000	RBMI4
5,1	11,1	1,9	3,0	5	1000	RBMI5
6,1	12,5	1,9	3,6	6	1000	RBMI6

d	D	h	H	M	Minimum sales Quantity	SKU
8,1	16,0	2,4	5,1	8	1000	RBMI8
10,2	19,0	2,7	5,4	10	1000	RBMS10
12,2	23,1	2,8	5,7	12	1000	RBMS12
3,0	7,0	1,3	2,2	3	1000	RBMS3
4,1	9,1	1,6	2,5	4	1000	RBMS4
5,1	11,1	1,9	3,0	5	1000	RBMS5
6,1	12,5	1,9	3,6	6	1000	RBMS6
8,1	16,0	2,4	5,1	8	1000	RBMS8



Bülte England
37B Basepoint Centre Harts Farm Way Havant Hampshire PO9 1HS