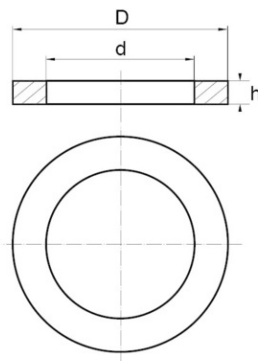


Washers NFE 25-513 – ZU



Details du produit

Description

The ZU series NFE 25-513 nylon washer is a standard flat washer available in various sizes. This washer, which is a little narrower than the MU series, has many advantages.

Advantages

They protect and offer very good insulation.

Qualities

Nylon washers resist corrosion and most dilute acids. They absorb shocks and vibrations.

usage

The NFE 513 Bülte washer distributes the force of the screw head or nut over a bearing surface. It is often used in the field of aeronautics, industry but also mechanics. Please note : The finish of each piece may differ according to the reference chosen. Depending on the mold, the surface may be more or less rough. For pearlescent or metallic colors, streaks and color nuances may appear at the weld line. Illustrations are not contractual.

d	D	h	M	Minimum sales Quantity	SKU
2,7	5,0	0,5	2,5	1000	276112.5ZUA
3,2	6,0	0,8	3	1000	276113ZUA
4,3	8,0	0,5	4	1000	276114ZUA
6,4	12,0	1,0	6	1000	276116ZUA



