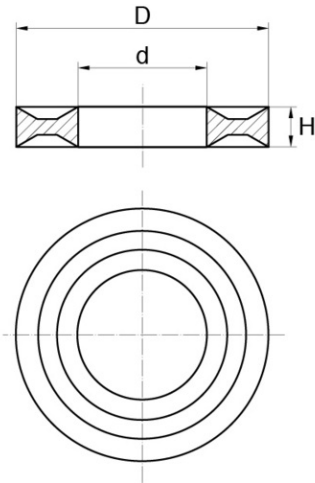


Flat sealing washers



Details du produit

Description

As the name suggests, this washer provides a higher level of sealing than normal flat washers. It is a flat washer, thin in thickness. For this product range, RAL colours are not applicable (only available in black).

Advantages

The ribs provide a seal between the fastener head and the component contact face and helps to prevent ingress of liquids and dirt between the two faces.

Qualities

This Bülte flat sealing washer is only available in PE. The properties of polyethylene provide good chemical resistance, is non corrosive and light. For this product range, RAL colours are not applicable (except for black).

usage

They can be used in all fields of activity but are frequently found in the lighting sector.

d	D	h	M	Minimum sales Quantity	SKU
10,5	22,0	2,0	10	1000	REP1022D+
10,5	30,0	2,0	10	1000	REP1030D+
10,0	40,0	2,0	10	1000	REP1040D+
13,5	24,0	2,5	12	1000	REP1324D+
13,5	52,0	2,0	12	1000	REP1352D+
26,0	34,0	2,5	Ø 26	1000	REP2634D+
8,0	40,0	2,0	8	1000	REP840D+



Bülte England

37B Basepoint Centre Harts Farm Way Havant Hampshire PO9 1HS