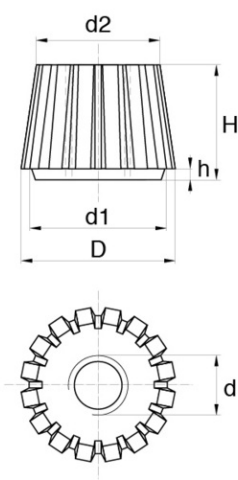
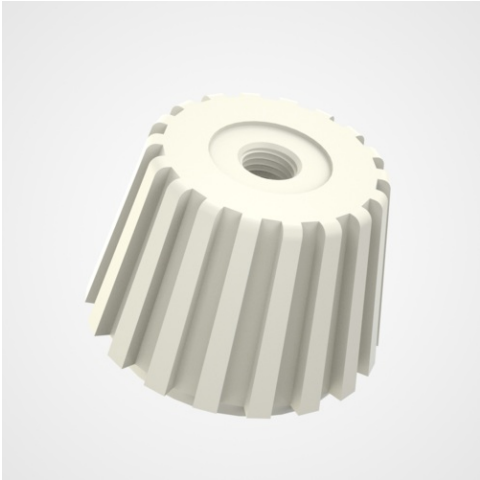


Conical knurled nuts



Details du produit

Description

This is an externally tapered knurled nut offering a style choice for components and applications such as point of sale and advertising hordings etc...

Advantages

Made for ease of use by hand

Qualities

Lightweight and non corrosive with all the advantages offered by polyamide (nylon) including a working temperature range of -30C to +100C

usage

For use in applications which only require minimal torque and frequent use.

d	d1	d2	D	h	H	Minimum sales Quantity	SKU
M4	14,0	13,0	16,0	1,0	12,0	1000	EMT4A
M5	14,0	13,0	16,0	1,0	12,0	1000	EMT5A
M6	14,0	13,0	16,0	1,0	12,0	1000	EMT6A