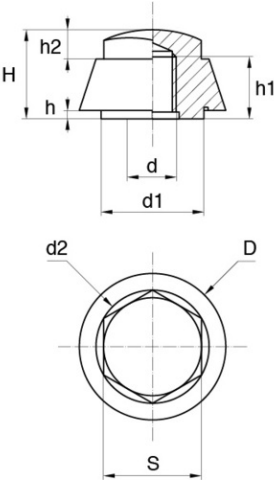
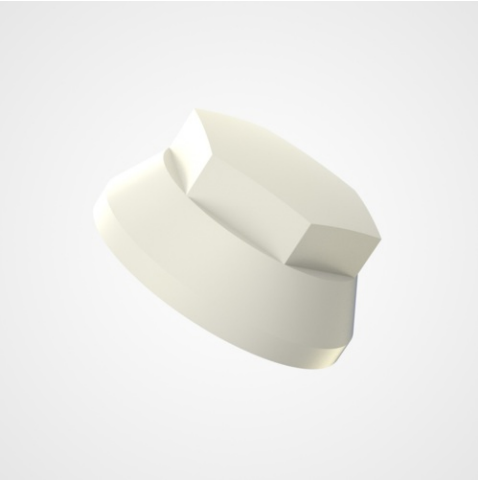


# Hex insulating cap nuts



## Details du produit

### Description

It is a closed nut which has a dual function of tightening but it is also used to insulate. Due to its shape, it is considered a finishing nut.

### Advantages

Its particularity lies in its hexagonal hat shape.

### Qualities

These nuts are lightweight and stainless, but they are resistant to wear and weather.

### usage

It can be used in all sectors of industry but it is especially suitable for assemblies which need an aesthetic and insulating finish.

d1	d2	D	h	h1	h2	H	M	S	Minimum sales Quantity	SKU
17,0	19,6	25,0	0,8	9,0	6,0	15,0	8	17	1000	EIM08A
16,4	21,0	30,0	1,3	14,0	5,5	19,5	12	19	1000	EIM12A